

**Venue:**

Golden Gate Club

[Website](#) | [Directions](#)

**Address:** 135 Fisher Loop, San Francisco, CA 94129

**Phone:** (415) 561-5444

**Your Sponsor Coordinator:**

Corinne Young

[cyoung@sfhp.org](mailto:cyoung@sfhp.org)

415-615-5863

## Sponsor FAQ

**Q: What is the WHIT?**

A: Founded in 2015 by a group of women in executive or senior leadership IT roles who are passionate about bringing more female talent to the healthcare IT industry. Committee participation is wholly on a volunteer basis. This group is affiliated with both Healthcare Information & Management Systems Society (HIMSS) Northern and Southern California Chapters. The primary objective of WHIT is to seed, incubate, and advance women's career aspirations in Healthcare IT.

**Q: Is there a theme for the 2017 event?**

A: On Friday, May 19, WHIT will be hosting its inaugural event, "Path to Success" for women in HIT. The event will be headlined by some of healthcare IT's top women including political advisors, journalists, c-level executives and technologists. There will be no-holds barred discussions about achieving success as women in HIT. These leaders will share their first-hand experiences and will be available for consultation and Q&A in small group table discussions.

**Q: What's the format of the event?**

A: The day-long event is strategically organized into three tracks:

1. **Keynote Speaker:** An established woman who "made it" in the field and showcase her path to success story.
2. **Panel Conversations** of four successful women in different healthcare IT fields who will share their paths to success with attendees in a facilitated Q&A session.
3. **Intimate Table Discussions:** Designed to allow attendees who would like to advance their career but are lacking the know-how skills. Each table will focus on specific know-how skills for the attendees.

**Q: What are some of the topics that will be addressed?**

A:

START	END	ACTIVITIES	NAME
8:00a	8:30a	Breakfast Mixer	
8:30a	9:00a	Welcome & Opening Remarks	Emcee & WHIT President Introduction of WHIT
9:00a	10:00a	Special Guest Speaker	<b>Nicole Fisher</b> <b>Theme: Path to Success</b> Female success story (gender barrier; inspiration story)
10:00a	10:30a	Coffee/Snack Break	
10:30a	11:45a	Breakout Sessions	Intimate Table discussions for early careerists Mid-career change
11:30a	12:45p	Buffet Lunch	
12:45p	2:00p	Panel Discussion: Path to Success	Moderator: Melissa Scrymgeour Panelists: <ol style="list-style-type: none"> <li>1. Sherri Douville, CEO &amp; board member, Medigram</li> <li>2. Rachel Katz, CEO of Able Health</li> <li>3. Dr. Mylea Charvat, CEO &amp; Founder, Savonix</li> <li>4. Stevie Bahu, President, Northern California HIMSS</li> </ol>
2:00p	2:30p	Coffee/Snack Break	
2:30p	3:30p	Breakout Sessions	Intimate Table discussions for early careerists Mid-career change
3:30p	4:00p	Closing Remarks	Emcee
4:00p		Networking Cocktail	

**Q: Event Date and Where**

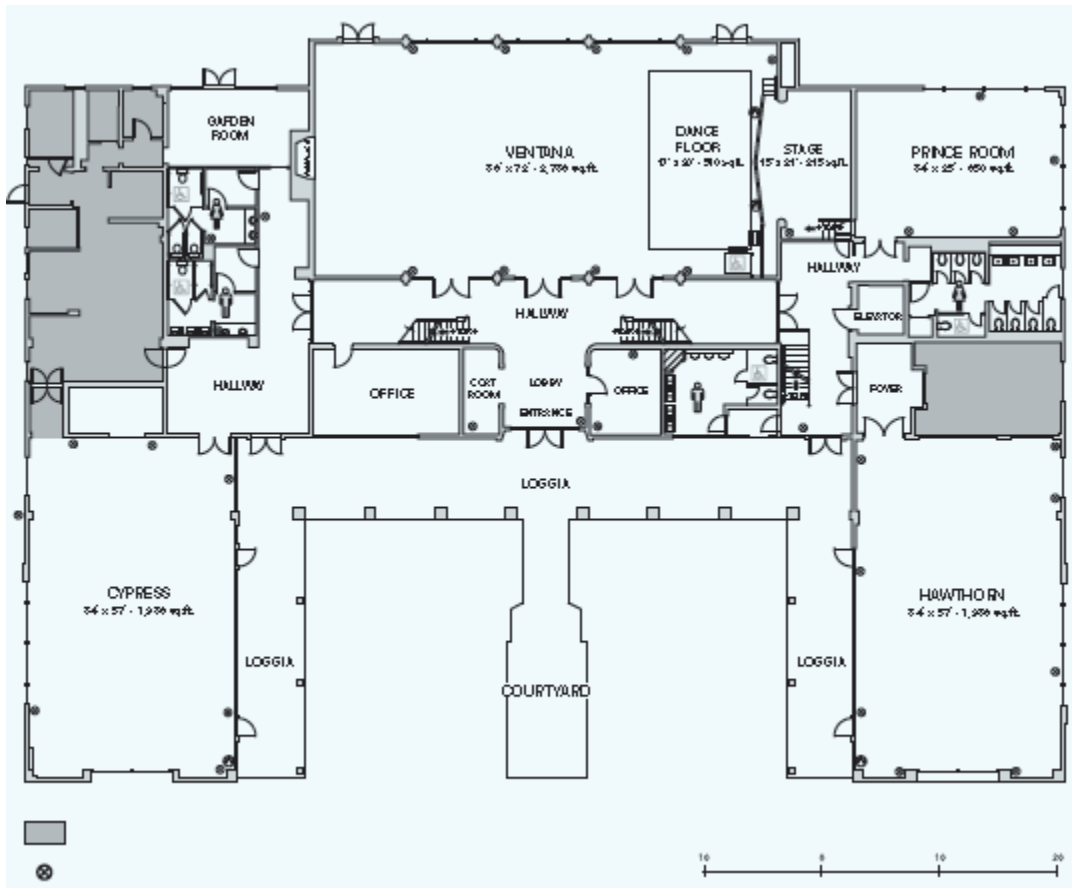
A: Friday, May 19<sup>th</sup>, 2017. San Francisco Golden Gate Presidio

**Q: Size of Venue**

A: The venue can accommodate up to 280 attendees in a theater style setting. However, WHIT is budgeting for approximately 120 attendees as we intend to make this an intimate event. The venue can also accommodate 15 sponsor/exhibitors tables have been reserved for our sponsors. Exhibit area could be used for happy hour for last 1-1.5 hours adjacent to the main conference area.

**Q: Can the space be broken into two rooms? If not, is there an adjacent area that can be used for breakout sessions?**

A: The venue has several breakout session rooms. Please see the venue layout below.



**Q: Value for being Sponsors of WHIT Path to Success Event**

A:

**Elite Sponsor - \$5,000 (3 sponsors)**

- 3 Event tickets
- Banner on event materials and website
- Logo on stage
- Access to attendee email list
- Onsite signage
- Insert into event bag
- Giveaway to attendees
- Table space for presentation

**VIP Sponsor - \$1,000 (unlimited)**

- Logo on event bag
- Onsite signage
- Insert in event bag
- Logo on event materials and website
- Table space for presentation

**Lunch Sponsorship - \$5,000 (limited)**

- 5 minute welcome address
- Signage with logo
- Exclusive signage in the dining hall
- Logo on website and brochure
- About us in brochure
- Give away to attendees
- Table space for presentation

**Cocktail Reception Sponsorship (\$4000)**

- 5 minute welcome address
- 3 event invitations
- Exclusive signage during cocktail hour
- Logo on cocktail napkins
- Logo cocktail glasses (4.35 per glass)
- Give-away to attendees

### T-shirts sponsors (\$500)

- Vote on design
- Logo on t-shirt
- Giveaway to attendees
- Logo on event website and materials

### Tchotchke sponsors (\$1000 - 1,500)

- Branded selfie sticks to capture the amazing futures/journeys or attendees
- Branded Sunglasses –future is so bright, attendees need sunglasses
- Branded Eos Lip Balm
- Branded collapsible water bottles

### Q: Dates for Potential Visit to view the venue?

A: We are currently working with the venue vendor. At this time we do not anticipate the need for a site visit. Below is the layout of the venue. Ventana will be the main event floor.

